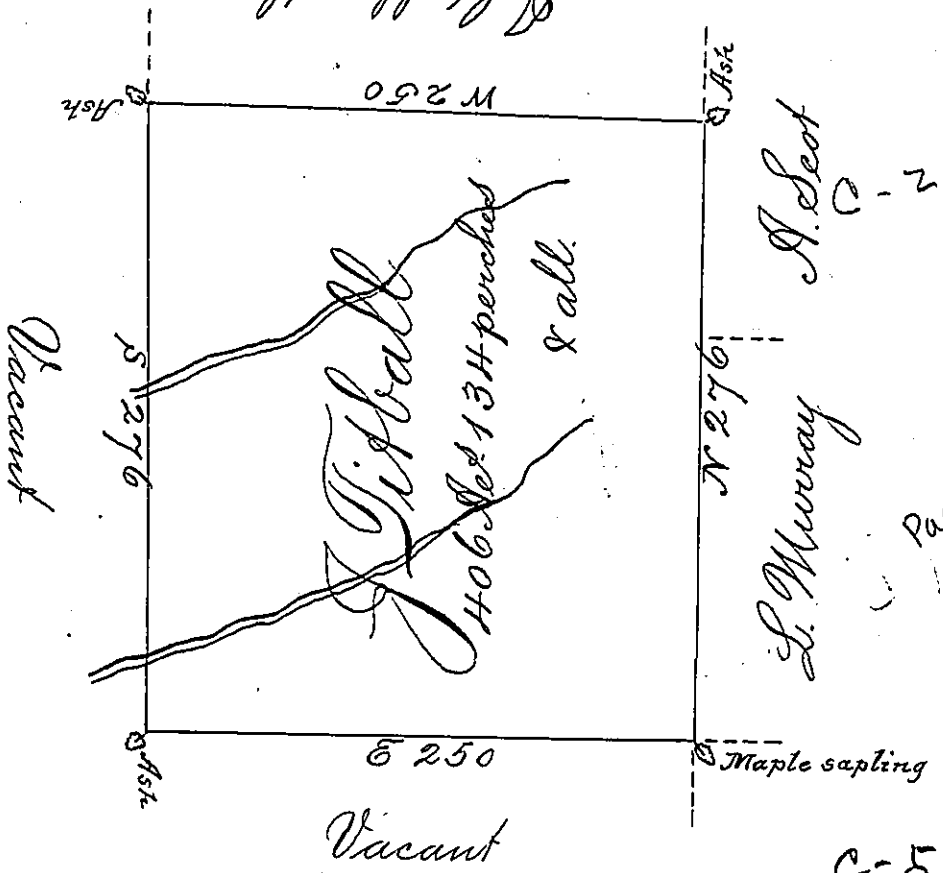


C-79-134

J. G. Galt



A. Sect C-205-82

L. Murray

Page-243 ??

C-53-121

By Virtue of a Warrant dated 26<sup>th</sup> of October 1784 Surveyed the fifth of July 1785 unto Jane Titball the above described Tract of Four hundred and six Acres and 134 perches of Land & allowance Situated on some small branches of Little Fishing Creek adjoining Land of Lecky Murray in North bd County

By Wm Montgomery D.S.

To Daniel Brodhead Esq<sup>r</sup>  
 Surveyor Gen<sup>l</sup> of Pensylva<sup>a</sup>

18

IN TESTIMONY that the above is a copy of the original remaining on file in the Department of Internal Affairs of Pennsylvania, made conformably to an Act of Assembly approved the 16th day of February, 1833, I have hereunto set my Hand and caused the Seal of said Department to be affixed at Harrisburg, this fourth day of February 1902.

James W. Latta  
 Secretary of Internal Affairs.